

# SY135C

TRACKED EXCAVATOR

**Max. Gross Power**

78.5 kW / 2,000 rpm

**Operating Weight**

14,870 kg

**Max. Dig Depth**

5,460 - 5,960 mm



**SANY:**

# QUALITY CHANGES THE WORLD

Founded in 1989, SANY has grown into one of the world's largest construction equipment manufacturers, with global R&D and production – including European facilities – and machines working in 150+ countries. Our range spans excavators, road and port machinery, and cranes, built with proven manufacturing heritage and modern quality systems.

## A GLOBAL LEADER BEHIND EVERY RANGE

From compact excavators to high-tonnage earthmovers, cranes, telehandlers, concrete machinery, road equipment and more, SANY's worldwide product range reflects decades of innovation, investment, and real-world experience.

This broad international range is proven on job sites in over 150 countries, ensuring every machine delivered to Europe is backed by extensive testing, real-world performance and the strength of a global supply chain.

## ENGINEERED FOR OUR EUROPEAN CUSTOMERS

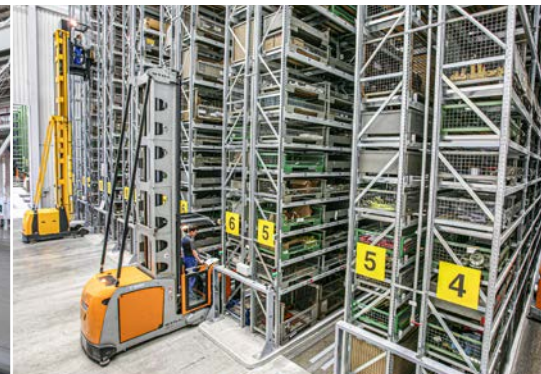
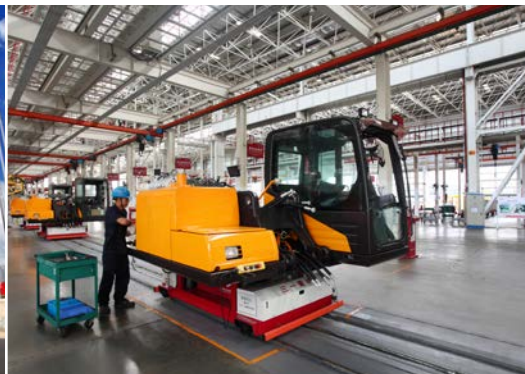
Every SANY machine destined for Europe is engineered to meet European regulations and real-world use cases – from CE and Stage V compliance to region-specific specifications and options.

For European construction customers, this worldwide capability translates directly into trust. SANY selects and engineers its product line specifically for local requirements, combining global innovation with European-quality standards, dealer support and service.

## GLOBAL MANUFACTURING EXCELLENCE

SANY's long-standing commitment to quality and innovation – supported by advanced intelligent manufacturing and a sustained 5-7% of annual revenue reinvested into R&D – results in machines that deliver reliability, efficiency, and consistent performance on site.

With state-of-the-art production facilities and rigorous global testing standards, every machine is built to withstand demanding conditions and deliver long-term value.



# INTRODUCING THE SY135C

The SANY SY135C tracked excavator combines compact conventional tail-swing design with powerful, efficient performance. The Stage V Isuzu engine delivers 78.5 kW at 2,000 rpm, while twin auxiliary load-sensing hydraulics maximise productivity and minimise fuel consumption.

Two-speed tracking, standard hammer and bi-directional pipework, and quick-hitch compatibility make the SY135C highly versatile, while heavy-duty steel bodywork and premium components ensure long-term durability and low operating costs.



## WHY CHOOSE SANY EXCAVATORS



### WORLD RENOWNED COMPONENTS

SANY uses proven, top-tier components to deliver long-lasting reliability – meaning you benefit from fewer breakdowns, longer service life, and lower ownership costs.



### GREAT VALUE, UNCOMPROMISED QUALITY

You can have confidence in your Return on investment. SANY excavators are loaded with the latest innovation to help reduce costs, increase productivity and protect resale value.



### INDUSTRY LEADING 5 YEAR WARRANTY

Built to last – and backed by an industry-leading warranty – giving you lower risk, predictable costs, and confidence on every job.



### LOW OPERATING COSTS

Simple engineering, readily available parts, and low fuel consumption reduce ongoing running costs – a major advantage in Europe's high-cost markets.



### LOCAL SUPPORT

Europe-wide expert dealers and value-added aftermarket support keep your machine running, minimise downtime, and simplify ownership.



### STANDARD ADVANCED FEATURES

SANY excavators include game-changing features as standard – no costly add-ons or custom modifications required.

**SY135C**

# PRODUCTIVITY

Powerful, compact, and engineered for performance, the SY135C is built to keep productivity high and jobs moving on demanding sites. Equipped with standard bi-directional hydraulics and quick-hitch, the SY135C unlocks true attachment flexibility and faster task changes delivering greater efficiency, smoother workflows, and more work completed in less time.



## COMPACT DIMENSIONS

← The SY135C's conventional tail swing delivers powerful, reliable performance in a compact footprint – making it easy to work efficiently on busy or space-restricted sites.

Integrated tie-down points on the undercarriage simplify secure transportation – cutting loading time, improving load restraint compliance, and reducing risk of damage during transport.

## HYDRAULICS DESIGNED FOR PRODUCTIVITY

→ SANY's twin auxiliary hydraulics as standard allow you to operate a wider range of attachments with powered movement in both directions, giving you reversible control and faster task changes.

SANY's hydraulic quick hitch enables in-cab attachment changes within seconds, eliminating manual pin removal, reducing exposure to pinch points, and minimising downtime between tasks.

## VERSATILE OPERATION

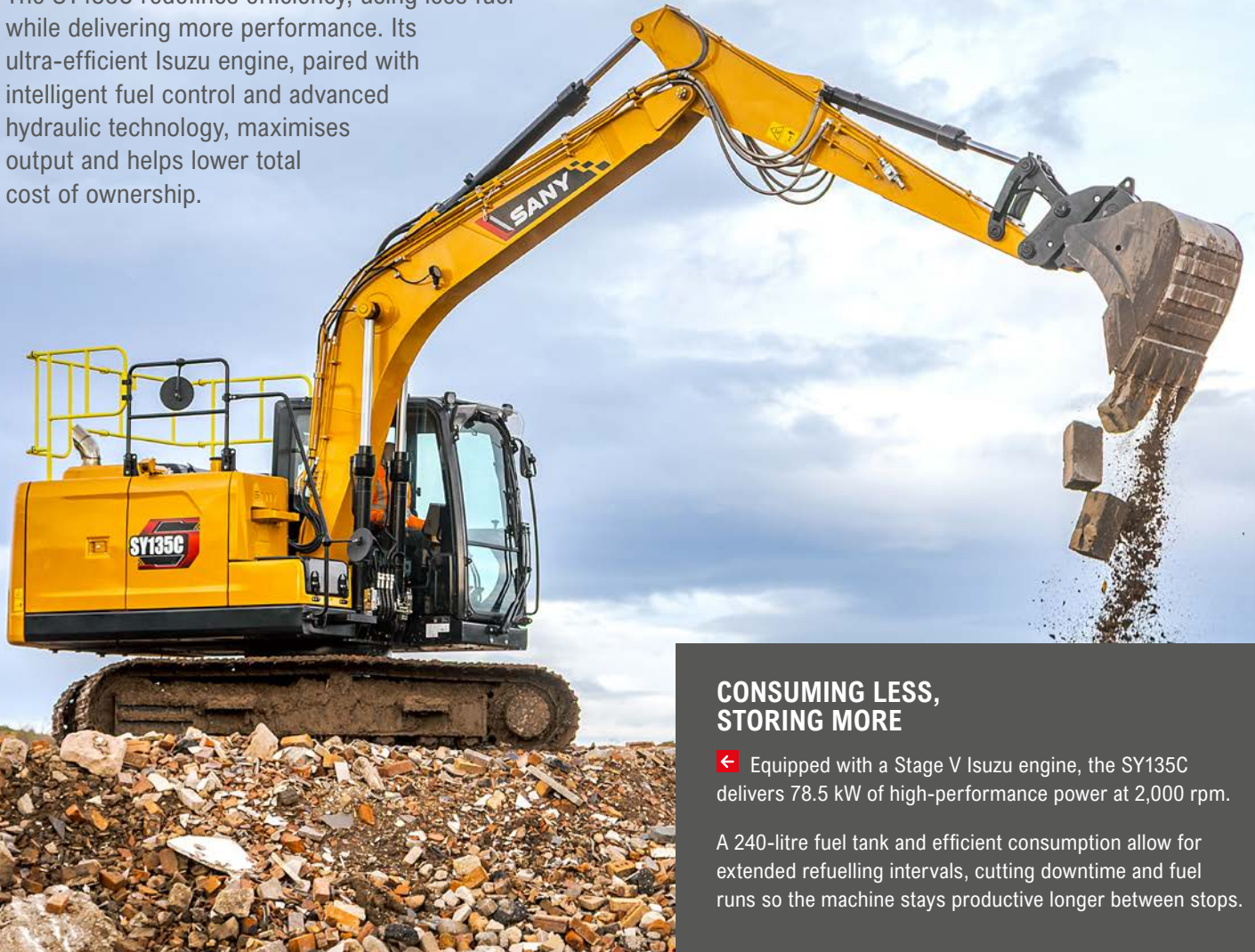
Equipped with standard hammer and bi-directional pipework, the SY135C is ready to run a wide range of attachments for maximum on-site versatility.



**SY135C**

# EFFICIENCY

The SY135C redefines efficiency, using less fuel while delivering more performance. Its ultra-efficient Isuzu engine, paired with intelligent fuel control and advanced hydraulic technology, maximises output and helps lower total cost of ownership.



## CONSUMING LESS, STORING MORE

← Equipped with a Stage V Isuzu engine, the SY135C delivers 78.5 kW of high-performance power at 2,000 rpm.

A 240-litre fuel tank and efficient consumption allow for extended refuelling intervals, cutting downtime and fuel runs so the machine stays productive longer between stops.

## EFFICIENT OPERATION

↓ SANY's two-speed tracking lets the operator choose high or low travel to match terrain and task reducing unnecessary revs and therefore fuel usage.



## ENERGY-EFFICIENT HYDRAULICS

→ SANY's load-sensing hydraulics deliver only the flow and pressure the working circuits need, so the system wastes less energy and burns less fuel.

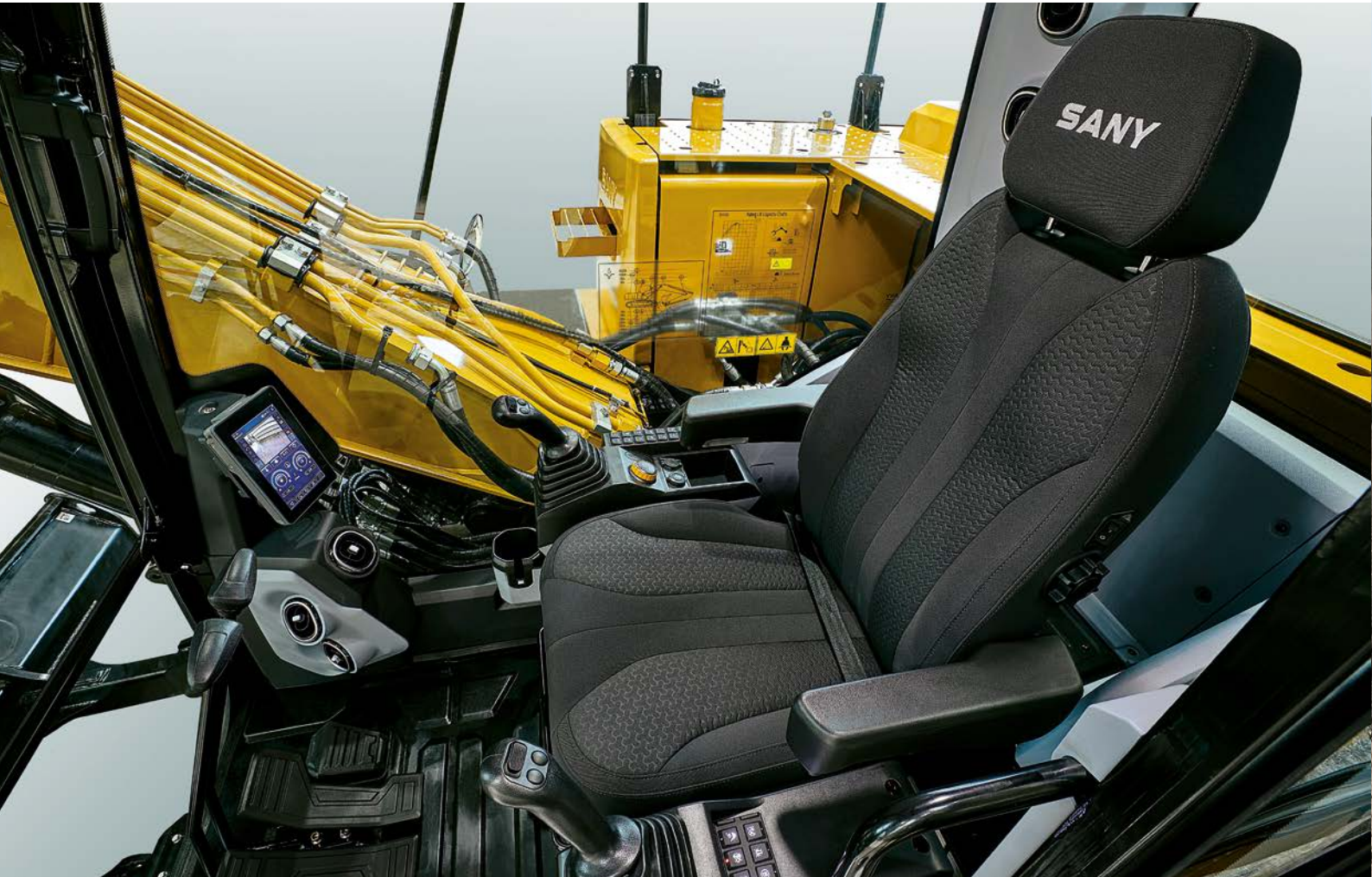
A well-matched engine and hydraulic system that measures pump output to demand, reducing wasted flow and fuel resulting in lower running costs for the customer.



**SY135C**

# OPERATOR ENVIRONMENT

Experience the elevated operator environment of the SY135C. Every element – from the supportive seat to the well-positioned controls is engineered to maximise efficiency, enhance safety, and deliver all-day comfort, helping operators work with greater ease and precision.



## PREMIUM COMFORT

↑ The ergonomic operator's cab of the SY135C excavator features a heated, air-suspension seat and adjustable armrests, designed to keep operators comfortable, focused, and productive.

A standard-fit heater and automatic air-conditioning keeps the cab warm and comfortable, ensuring operators remain productive in all weather conditions.

The quiet, low-vibration engine reduces noise and vibration levels to a minimum, creating a more comfortable operating environment and allowing the machine to work effectively in noise-sensitive areas.

## JOB SITE AWARENESS

↑ The sophisticated cab design, large windows and all-round mirrors provide clear visibility of the surrounding workspace, improving operator awareness and safety on site.



## EVERYDAY EASE

↙ Clear instrumentation and a high-resolution 10" touchscreen colour display make machine operation easier and more intuitive, helping operators work with confidence and precision.

Standard dual proportional joysticks ensure precise, intuitive control –helping operators work faster, safer and more efficiently with any attachment.

For added comfort and practicality, the SY135C features a bluetooth radio, USB socket, integrated cool box and generous storage for operator convenience.

**SY135C**

# SAFETY & SECURITY

The SY135C is equipped with a generous standard specification when it comes to safety on site, with every aspect designed to protect both the operator and machine in demanding environments. Excellent visibility, a rigid frame, and carefully integrated safety features improve operator awareness, helping to minimise hazards and promote confident, controlled operation.



## PROTECTING BYSTANDERS

← Energy efficient LED work lights are positioned on the front of cab, boom and platform for maximum versatility in poor or low light conditions.

A combination of large mirrors and camera systems – including a 360° camera or rear-view camera depending on market specification – gives operators greater awareness of their surroundings for safer, more controlled operation.

## STRUCTURAL INTEGRITY

↑ ROPS, TOPS and FOPS certification ensures the SY135C excavator meets stringent rollover, tip over and falling objects protection standards.

Heavy-duty steel bodywork provides robust protection against on-site damage, safeguarding vital structures and contributing to reduced lifetime ownership costs.

## EMERGENCY SHUTDOWN

Featuring both a battery disconnect switch and an emergency stop button, the system allows immediate power isolation to enhance operator and site safety.

## ADVANCED SECURITY

Lockable service doors protect critical components and fuel systems, preventing unauthorised access and enhancing site security.

Backed by the CESAR Datatag Scheme for proven theft deterrence and equipped with CESAR ECV, these machines allow swift and dependable verification of emissions category.

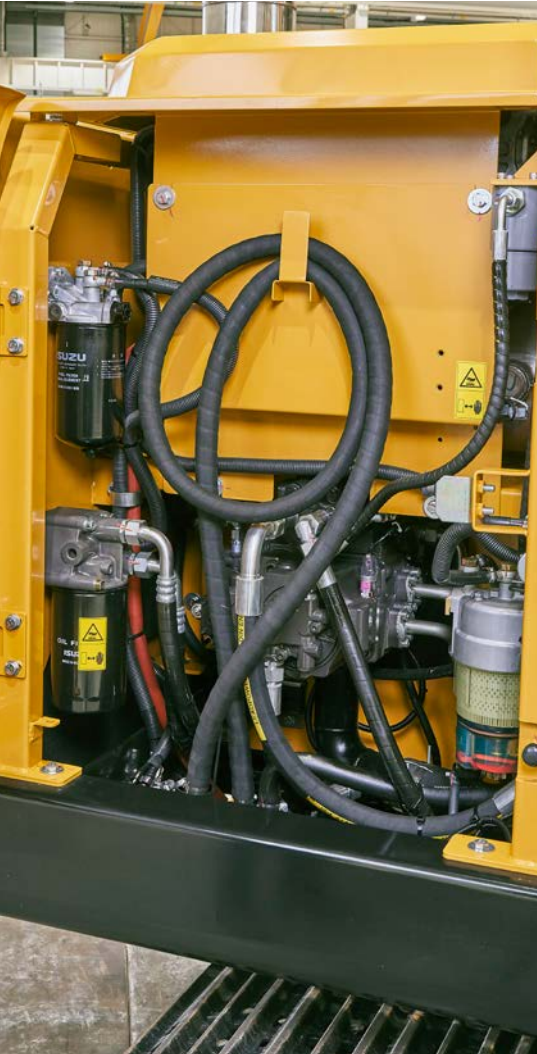
← Advanced anti-theft EVI telematics employ GPS tracking and configurable geofencing, this along with a password protected keyless stop/start function, safeguard the machine from theft and unauthorised use.



**SY135C**

# SERVICE & MAINTENANCE

Designed for optimal uptime, SANY excavators feature wide service doors, clearly accessible service points, and extended service intervals to simplify maintenance and maximise machine availability. Premium, high-quality components consistent throughout the range further enhance durability and reliability, ensuring reliable performance shift after shift.



## MAINTENANCE MADE EASY

← SANY excavators are engineered for streamlined service and maintenance, with design features that make routine upkeep faster and more efficient.

A wide-opening engine door provides ground-level access to all key service points, ensuring that daily checks are quick, simple, and easy to perform whilst ergonomic handrails enable safe access to the maintenance platform.

## ROBUST STRUCTURES

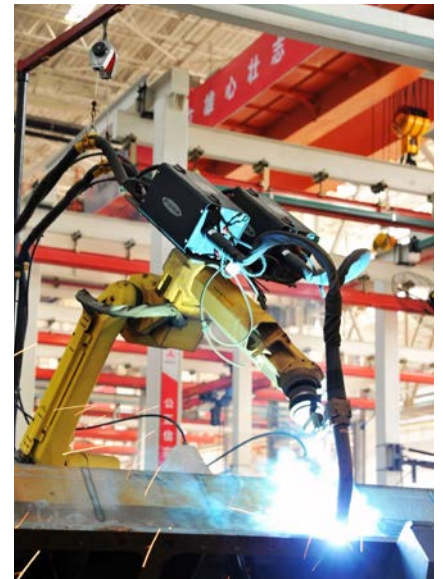
Integrated guarding for the dozer blade and hydraulic cylinders provides robust protection against on-site impacts, minimising the risk of component damage, unplanned downtime, and expensive repair work.

An X-beam configuration with a high-strength box-section structure provides exceptional durability and superior resistance to torsional forces.

## COMMON, PREMIUM COMPONENTS

↓ Produced in advanced manufacturing facilities in China, SANY excavators are built for high quality and lasting durability, utilising high-spec components from reputable global manufacturers.

Shared componentry across the range, combined with an extensive European dealer network, ensures rapid response and efficient turnaround for any machine repair.



## INCREASED WORKING HOURS

← With extended 500-hour service intervals, maintenance frequency is reduced, lowering operating costs and improving machine availability.

Real-time health alerts, remote diagnostics, and scheduled maintenance via SANY EVI telematics work together to enhance reliability and extend machine life.

**SY135C**

# ATTACHMENTS

SANY machines offer extended capability through a broad selection of easily interchangeable attachments. This range enables efficient performance across varied tasks such as digging, drilling, land clearing, material handling, and demolition.

## BUCKETS

↓ SANY provides a complete range of excavator buckets designed to enhance your machine's efficiency. From general-purpose digging buckets to more specialised options, they enable you to tackle a wide variety of job sites.



## QUICK HITCH

Equipped with quick hitches as standard, SANY machines enable rapid attachment changes, helping you get more done in less time. By reducing manual labour and ensuring a secure fit, they expand the machine's versatility and keep your operations running smoothly.

## BREAKERS

SANY breakers have been designed to deliver powerful breaking performance, long-lasting durability, and high efficiency. They are suitable for a wide range of applications such as quarry, tunneling, civil construction, trenching, road and landscaping.

## GRABS

SANY excavator grabs deliver powerful, reliable material handling with high clamping force, smooth hydraulic control and durable steel construction. The result is a cost-effective, high-performance attachment that boosts productivity and control on every job.\*

\*SANY attachment options may vary depending on country.

**SY135C**

# YOUR UPTIME. OUR PRIORITY.

Rely on SANY's value-added aftermarket services to keep your equipment operating at peak efficiency. From proactive maintenance to reducing unexpected downtime and controlling operating costs, we provide the support your business depends on. Our European service solutions further boost performance, streamline maintenance tasks, and improve profitability across your fleet.

## 5 YEAR WARRANTY

Built on a global reputation for reliability and durability, SANY excavators come with an unmatched 5-year warranty\* – one of the strongest in the industry.

It's a clear statement of the confidence we have in our machines and our commitment to your uptime. Your investment is protected from day one, giving you the assurance that if an issue arises, you're fully covered.

\*Terms and conditions apply.

## SERVICE AND SUPPORT

SANY's extensive network of certified technicians and dealer partners provides on-site service and technical expertise designed to minimise downtime and maintain peak machine performance.

Working in coordination with our advanced manufacturing facilities in China, our European teams combine global engineering capability with practical local support.

## SANY GENUINE PARTS

SANY genuine parts are engineered, rigorously tested, and manufactured to the exact specifications required by your machine. Their precise fit and compatibility guarantee maximum performance and system integrity.

By maintaining correct operational tolerances, they enhance on-site safety and significantly reduce the risk of unplanned failures or downtime. All genuine parts are supported by a 12-month warranty for added assurance.



**SY135C**

# INTELLIGENT SUPPORT

SANY's connected tools give you clarity, confidence, and control on every project. ROOTPILOT brings precision to the bucket; EVI Telematics brings visibility to the fleet. Together, they reduce downtime, cut costs, and boost productivity. Smart technology – driving your success.



Designed exclusively for Europe, our digital fleet management system EVI gives you complete visibility of your machines whenever and wherever you need it. By simplifying fleet oversight, it enables better decision-making, lowers costs, and improves uptime across your operations. With built-in safety and security features that let you monitor location and usage in real time, you gain greater control and peace of mind.

Key benefits include:

- Enhanced fleet visibility and remote machine management
- Set authorised operating hours and create geofenced security zones to reduce theft risk and misuse
- Greater visibility of routine checks and machine health
- Multi-channel, real-time communication for faster decision-making
- Operating report analysis for smarter, data-led decision-making
- Customer account management for personalised, data-backed communication



SANY ROOTPILOT is a high-precision 3D machine-control system that uses GNSS, IMU sensors, and smart algorithms to guide excavators in real time. It gives operators clear, intuitive 3D feedback for faster, safer, and more accurate digging.

ROOTPILOT installs quickly, works with multiple machines and attachments, and syncs designs through the cloud so every operator works from the same plan. It's ideal for highways, municipal works, and foundation projects where precision is critical.

Available in Fundamental and Premium versions, ROOTPILOT supports everything from basic grading to full 3D model guidance, offsets, layer control, and complex digital designs.

Main customer benefits:

- $\pm 3$  cm accuracy for first-time-right excavation
- Avoidance of underground utilities and hazards
- Lower fuel, labour, and rework costs
- Faster production with fewer survey checks
- Works with 2D or full 3D design models
- Boosts operator confidence and consistency

**SY135C**

# SPECIFICATION

## ENGINE

Model	ISUZU 4JJ1X Stage V
Type	Water-cooled, 4-cylinder, common rail with AdBlue
Exhaust emissions	Stage V
Rated power	78.5 kW / 2000 rpm
Max. torque	375 Nm / 1800 rpm
Displacement	3999 cc
Batteries	2 x 12V / 120 Ah

## HYDRAULIC SYSTEM

Main pump	2 x variable piston pumps with electronic control
Max. oil flow	126 L/min
Max. oil flow (AUX 1)	126 L/min
Max. oil flow (AUX 2)	40 L/min
Travel motor	Variable displacement axial piston motor
Swing motor	Axial piston motor

## PERFORMANCE

Swing speed	12 rpm
Max. travel speed	High 5.3 km/h
Max. travel force	113 kN
Gradeability	70%/30°
Bucket capacity	0.6 m³
Ground pressure	39 Kpa
Bucket digging force (ISO)	93 kN
Arm digging force (ISO)	66 kN

## SERVICE REFILL CAPACITIES

Fuel tank	240 L
Engine coolant	27 L
Engine oil	16.7 L
Drive (per side)	2.2 L
Hydraulic system	175 L

Based on theoretical calculation at max flow with no load.

Subject to alterations.

In the interest of continual equipment development, SANY reserves the right to change these specifications at any time without prior notification.

## OPERATING WEIGHT

14,870 kg

Note: Includes 75kg (165 lb) operator, full fuel tank and excludes any attachments or hitch.

## UNDER & UPPER STRUCTURE

Boom length	4600 mm
Arm length	2500 mm and 3000 mm
Bottom rollers	7
Top rollers	1
Rotation device	Planetary gear reducer driven by an axial piston motor, automatic hydraulic released slewing brake

## RELIEF VALVE SETTINGS

Implement circuit	34.3 MPa
Swing circuit	31 MPa
Travel circuit	34.3 MPa
Pilot circuit	3.9 MPa

## SOUND LEVEL

Noise level inside cabin	72 dB(A)
Noise guaranteed value	101 dB(A)

**SY135C**

# SPECIFICATION

## SY135C LIFTING CAPACITIES - WITHOUT DOZER BLADE (2,500MM ARM)

Load Point Height (B)	Radius (A)										Digging Reach		
	2.0 m		3.0 m		4.0 m		5.0 m		6.0 m		7.0 m		Max
7.0 m kg	3200* 3200*										2550*	2550*	
6.0 m kg	3150* 3150*										2250*	2250*	
5.0 m kg	3500* 3500* 2400* 2400*										2100*	2100*	
4.0 m kg	3950* 3950* 3700* 3500 3550* 2650										2050*	2050*	
3.0 m kg	5800* 5800* 4650* 4650* 4050* 3400 3700* 2600										2050*	2050*	
2.0 m kg	7500* 6800 5450* 4500 4500* 3300 3950* 2550 2300* 2050										2100*	2100*	
1.0 m kg	6800* 6450 6150* 4300 4900* 3200 4150* 2500 2450* 2000										2200*	2200*	
Ground line kg	6750* 6300 6500* 4200 4900* 3200 4300* 2450										2350*	2350*	
-1.0 m kg	4550*	4550*	8450*	6250	6550*	4100	5200*	3050	4250*	2400		2600*	2600*
-2.0 m kg	6900*	6900*	8150*	6300	6300*	4100	5000*	3050	3950*	2400		3050*	3050*
-3.0 m kg	9600*	9600*	7200*	6350	5600*	4150	4350*	3100				3750*	3750*
-4.0 m kg	5500* 5500* 4150* 4150*										3550*	3550*	








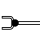






## SY135C LIFTING CAPACITIES - WITHOUT DOZER BLADE (3,000MM ARM)

Load Point Height (B)	Radius (A)										Digging Reach		
	2.0 m		3.0 m		4.0 m		5.0 m		6.0 m		7.0 m		Max
7.0 m kg	3323* 3323*										2506*	2506*	
6.0 m kg	4020* 4020* 3278* 3243										2185*	2185*	
5.0 m kg	4149* 4149* 3884* 3240 2558* 2512										2041*	2041*	
4.0 m kg	4697* 4697* 4582* 4192 4083* 3180 3282 2498										1993*	1993*	
3.0 m kg	6777* 5549 5198 4021 4026 3084 3233 2448										1985*	1985*	
2.0 m kg	6731 5161 5003 3826 3915 2974 3170 2385 2514* 1949										2039*	1919	
1.0 m kg	6460 4891 4836 3659 3813 2871 3108 2323 2591 1918										2148*	1889	
Ground line kg	6346 4777 4728 3551 3736 2794 3059 2274										2330*	1916	
-1.0 m kg	4654*	4654*	6317	4748	4676	3499	3693	2751	3078	2293		2622*	2008
-2.0 m kg	7181*	7181*	6336	4766	4671	3494	3685	2743	3039	2254		2956	2192
-3.0 m kg	7336*	7336*	5958*	4826	4709	3532	3616*	2780				2973*	2541
-4.0 m kg	3774* 3774* 2871* 2871*										2293*	2293*	















1. This capability is calculated according to GB/T 13331, ISO10567 standards. The limiting coefficient of the hydraulic system is 0.87, and the tipping coefficient is 0.75.
2. Marked with \* is limited by hydraulic pressure, marked without \* is limited by stability.
3. The lifting point is the support hole in front of the bucket rod (excluding the weight of the bucket). If there are additional accessories such as buckets, they should be deducted from the above lifting weight.
4. A- Radius of loading point (m), B- Loading point height (m).

# SPECIFICATION

## SY135C LIFTING CAPACITIES - DOZER BLADE DOWN (2,500MM ARM)

Load Point Height (B)	Radius (A)										Digging Reach			
	2.0 m		3.0 m		4.0 m		5.0 m		6.0 m		7.0 m		Max	
														
7.0 m kg	*3200 *3200										*2550	*2550		
6.0 m kg	*3150 *3150										*2250	*2250		
5.0 m kg	*3500 *3500 *2400 *2400										*2100	*2100		
4.0 m kg	*3950 *3950 *3700 3500 *3550 2650										*2050	*2050		
3.0 m kg	*5800 *5800 *4650 *4650 *4050 3400 *3700 2600										*2050	*2050		
2.0 m kg	*7500 6800 *5450 4500 *4500 3300 *3950 2550 *2300 2050										*2100	2050		
1.0 m kg	*6800 6450 *6150 4300 *4900 3200 *4150 2500 *2450 2000										*2200	2000		
Ground line kg	*6750 6300 *6500 4200 *4900 3100 *4300 2450										*2350	2050		
-1.0 m kg	*4550 *4550	*8450 6250	*6550 4100	*5200 3050	*4250 2400							*2600	2150	
-2.0 m kg	*6900 *6900	*8150 6300	*6300 4100	*5000 3050	*3950 2400							*3050	2350	
-3.0 m kg	*9600 *9600	*7200 6350	*5600 4150	*4350 3100							*3750	2800		
-4.0 m kg	*5500 *5500 *4150 *4150										*3550	*3550		

## SY135C LIFTING CAPACITIES - DOZER BLADE UP (2,500MM ARM)

Load Point Height (B)	Radius (A)										Digging Reach			
	2.0 m		3.0 m		4.0 m		5.0 m		6.0 m		7.0 m		Max	
														
7.0 m kg	*3200 *3200										*2550	*2550		
6.0 m kg	*3150 *3150										*2250	*2250		
5.0 m kg	*3500 *3500 *2400 *2400										*2100	*2100		
4.0 m kg	*3950 *3950 *3700 3500 *3550 2650										*2050	*2050		
3.0 m kg	*5800 *5800 *4650 *4650 *4050 3400 *3700 2600										*2050	*2050		
2.0 m kg	*7500 6800 *5450 4500 *4500 3300 3900 2550 *2300 2050										*2100	2050		
1.0 m kg	*6800 6450 *6150 4300 *4900 3200 3800 2500 *2450 2000										*2200	2000		
Ground line kg	*6750 6300 *6500 4200 4900 3100 3750 2450										*2350	2050		
-1.0 m kg	*4550 *4550	*8450 6250	*6550 4100	4850 3050	3750 2400							*2600	2150	
-2.0 m kg	*6900 *6900	*8150 6300	*6300 4100	4850 3050	3750 2400							*3050	2350	
-3.0 m kg	*9600 *9600	*7200 6350	*5600 4150	*4350 3100							*3750	2800		
-4.0 m kg	*5500 *5500 *4150 *4150										*3550	*3550		

**SY135C**

# SPECIFICATION

## SY135C LIFTING CAPACITIES - DOZER BLADE DOWN (3,000MM ARM)

Load Point Height (B)	Radius (A)										Digging Reach			
	2.0 m		3.0 m		4.0 m		5.0 m		6.0 m		7.0 m		Max	
7.0 m kg					*3323	*3323							*2506	*2506
6.0 m kg					*4020	*4020	*3278	3243					*2185	*2185
5.0 m kg					*4149	*4149	*3884	3240	*2558	2512			*2041	*2041
4.0 m kg			*4697	*4697	*4582	4192	*4083	3180	*3758	2498			*1993	*1993
3.0 m kg			*6777	5549	*5241	4021	*4415	3084	*3899	2448			*1985	*1985
2.0 m kg		*8266	5161	*5947	3826	*4779	2974	*4073	2385	*2514	1949	*2039	1919	
1.0 m kg		*6624	4891	*6453	3659	*5063	2871	*4204	2323	*2713	1918	*2148	1889	
Ground line kg		*6784	4777	*6605	3551	*5168	2794	*4217	2274			*2330	1916	
-1.0 m kg	*4654	*4654	*8363	4748	*6384	3499	*5029	2751	*4087	2293			*2622	2008
-2.0 m kg	*7181	*7181	*7393	4766	*5794	3494	*4574	2743	*3484	2254			*3112	2192
-3.0 m kg	*7376	*7336	*5958	4826	*4748	3532	*3616	3100					*2973	2541
-4.0 m kg			*3774	*3774	*2871	*2871							*2293	*2293

## SY135C LIFTING CAPACITIES - DOZER BLADE UP (3,000MM ARM)

Load Point Height (B)	Radius (A)										Digging Reach			
	2.0 m		3.0 m		4.0 m		5.0 m		6.0 m		7.0 m		Max	
7.0 m kg					*3323	*3323							*2506	*2506
6.0 m kg					*4020	*4020	*3278	3243					*2185	*2185
5.0 m kg					*4149	*4149	*3884	3240	*2558	2512			*2041	*2041
4.0 m kg			*4697	*4697	*4582	4192	*4083	3180	3282	2498			*1993	*1993
3.0 m kg			*6777	5549	5198	4021	4026	3084	3233	2448			*1985	*1985
2.0 m kg		6731	5161	5003	3826	3915	2974	3170	2385	*2514	1949	*2039	1919	
1.0 m kg			6460	4891	4836	3659	3813	2871	3108	2323	2591	1918	*2148	1889
Ground line kg			6346	4777	4728	3551	3736	2794	3059	2274			*2330	1916
-1.0 m kg	*4654	*4654	6317	4748	4676	3499	3693	2751	3078	2293			*2622	2008
-2.0 m kg	*7181	*7181	6336	4766	4671	3494	3685	2743	3039	2254			2956	2192
-3.0 m kg	*7336	*7336	*5958	4826	4709	3532	*3616	2780					*2973	2541
-4.0 m kg			*3774	*3774	*2871	*2871							*2293	*2293

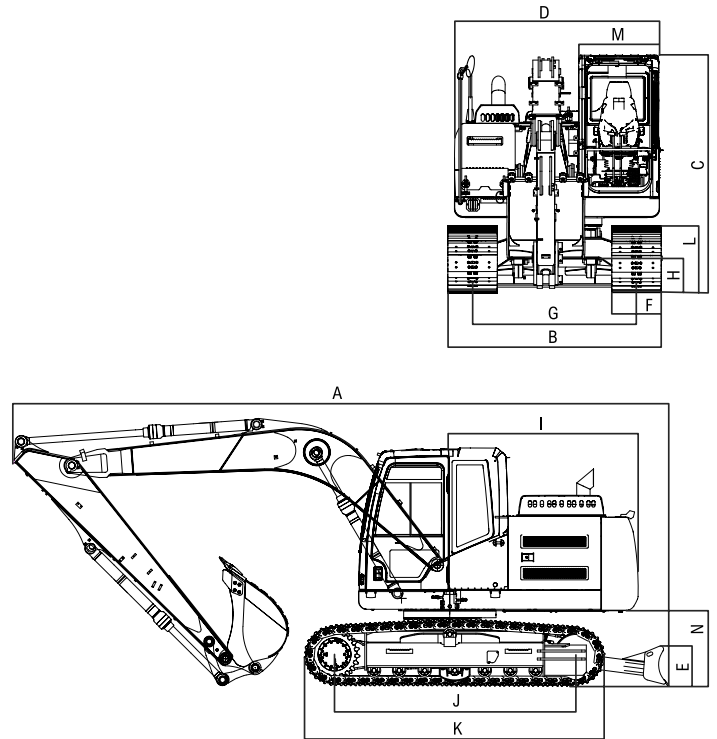
1. This capability is calculated according to GB/T 13331, ISO10567 standards. The limiting coefficient of the hydraulic system is 0.87, and the tipping coefficient is 0.75.
2. Marked with \* is limited by hydraulic pressure, marked without \* is limited by stability.
3. The lifting point is the support hole in front of the bucket rod (excluding the weight of the bucket). If there are additional accessories such as buckets, they should be deducted from the above lifting weight.
4. A- Radius of loading point (m), B- Loading point height (m).

**SY135C**

# SPECIFICATION

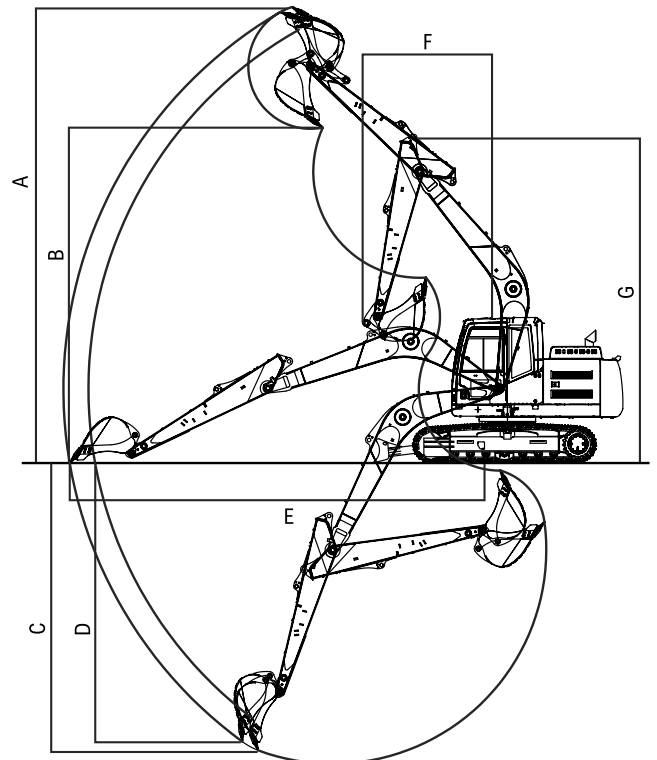
## DIMENSIONS (TRANSPORT)

	2500mm Arm	3000mm Arm
A Transport length	8100 mm	7960 mm
B Transport width	2590 mm	2590 mm
C Height over cabin/ROPS	2960 mm	3230 mm
D Upper structure carriage width	2490 mm	2490 mm
E Blade height	580 mm	580 mm
F Track width	500/600/700 mm	500/600/700 mm
G Track gauge	1990 mm	1990 mm
H Min. ground clearance	425 mm	425 mm
I Tail swing radius	2290 mm	2290 mm
J Track ground length	2930 mm	2930 mm
K Track length	3665 mm	3665 mm
L Track height	809 mm	809 mm
M Cab width	1000 mm	1000 mm
N Counterweight clearance	935 mm	935 mm
Height of boom – transport	3180 mm	3180 mm
Undercarriage width (blade)	2590 mm	2590 mm
Engine cover height	2310 mm	2310 mm
Horizontal distance to blade	2650 mm	2650 mm



## WORKING AREA

	2500mm Arm	3000mm Arm
A Max. digging height	8690 mm	9040 mm
B Max. dumping height	6280 mm	6520 mm
C Max. digging depth	5460 mm	5960 mm
D Max. vertical digging depth	4950 mm	5520 mm
E Max. digging reach	8320 mm	8820 mm
F Min. swing radius	2720 mm	2880 mm
G Overall height over arm by min. swing radius	6520 mm	6650 mm
Max. clearance when blade up	504 mm	504 mm
Max. depth of blade down	319 mm	319 mm



**SY135C**

# STANDARD/OPTIONAL EQUIPMENT

## OPERATORS COMFORT / CAB

Heated air suspension seat	•
Automatic air conditioning (C/H*)	•
10" Bluetooth touchscreen with built-in radio (FM/AM)	•
Armrests (adjustable)	•
12V outlets	•
Parallel wiper	•
10" touch display	•
Sky light window	•
AUX 1 on joystick	•
AUX 2 on joystick	•
Integrated cooling box	•
Cupholder	•

## WORKING LIGHTS

Lights x 2 – front (LED)	•
Lights x 2 – boom (LED)	•
Lights x 1 – rear (LED)	•

## UNDERCARRIAGE

Steel tracks (500/600/700 mm)	OPT
Cylinder guards – dozer blade	•
Holes / loops for fixing	•

## ENGINE

Auto idle	•
Electric re-fueling pump	•
Fuel pump	•

## SAFETY & SECURITY

ROPS, TOPS and FOPS cab	•
Battery master switch	•
Travel alarm	•
Beacon lamp	•
Emergency stop button	•
Retractable seatbelt	•
Lockable bonnet	•
Lockable fuel cap	•
Hand rails	•
Rearview camera	•
360° camera	OPT / • UK
All-round mirrors	•
EVI telematics	•

## WORKING EQUIPMENT

Boom and arm load holding valves with overload indicator	•
Cylinder guards – boom	•
Double acting circuit for hydraulic quick coupler with piping	•
Breaker & shear line proportional on joystick with piping	•
Rotation line proportional on joystick with piping	•
Oil flow rate adjustable for attachments	•
Arm (2500/3000 mm)	OPT

## HYDRAULIC SYSTEM

Swing brake	•
2-speed travel	•
Piping for additional hydraulic function AUX 1	•
Piping for additional hydraulic function AUX 2	•
Main filter	•
Hydraulic pre-pressure operating joysticks	•

The standard and optional equipment can differ depending on the country in which the machine is delivered. Please contact your local dealer for more information.







SANY HEAVY MACHINERY (UK) LTD  
Unit 6, M8 Interlink Estate,  
Coatbridge, Glasgow, ML5 4RP  
Tel: 0330 2021 318  
Email: [info@sanyuk.com](mailto:info@sanyuk.com)

[Sanyuk.com](http://Sanyuk.com)

Not all products are available in all markets.  
As part of our continuous improvement process,  
we reserve the right to modify specifications and  
designs without giving prior notice. Machines  
shown may feature additional options other than  
the standard machine specification.

HEX - SY135C - 03.2026 - EU - V1