



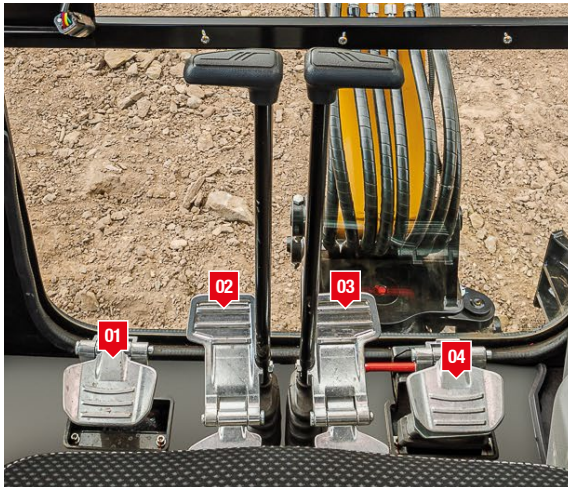
SY16C/SY18C QUICK START GUIDE



SY16C/SY18C Cab Layout

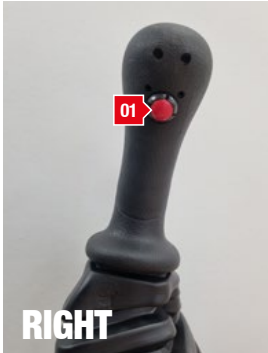


- 01 Left Joystick
- 02 Safety Lever
- 03 Fwd / Rev Levers
- 04 Right Joystick
- 05 Display
- 06 Blade Up & Down / Track Width



- 01 Foot Rest
- 02 Travel Left
- 03 Travel Right
- 04 Boom Swing

SY16C/SY18C Cab Layout / Joysticks



01 Spare



01 Not Used
02 Horn

Aux / Hammer Circuit Venting Process



- 01 Turn off engine using ignition key
- 02 Turn ignition key to first position



- 03 Move hammer switch on right hand control left and right several times until hydraulic pressure is released from circuit

Display Panel / Control Locations



- 01 Coolant Temperature
- 02 Engine Oil Pressure Warning
- 03 Battery Charge Indicator
- 04 EVI Signal
- 05 Fuel Level
- 06 Working Hours



- 01 Beacon
- 02 High / Low Travel Speed
- 03 Engine Speed / RPM
- 04 Blade / Track Width
- 05 Work Lights
- 06 Ignition Key, including pre-heat turned clockwise

Hydraulic Extendable Undercarriage



01 Ensure the track Extend / Retract switch is in the correct position



02 Once the operation is selected, use lever to adjust to the desired track width

Dozer Operation



01 Ensure the dozer operation is selected and the switch is in the correct position



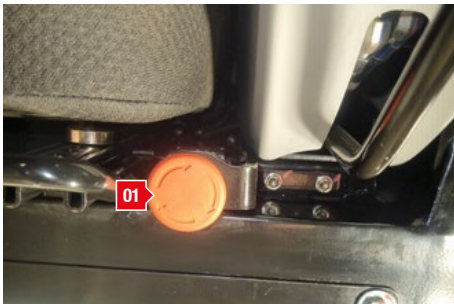
02 Once the operation is selected, use lever to raise / lower the dozer blade

Battery Isolator Location



- 01 Battery Isolator is located on the front left corner of the cab. The horizontal position is **ON**. The vertical position is **OFF**.

Emergency Stop Location



- 01 The Emergency Stop Switch is located by the cab door, or in the left hand arm console and displays as a Rocker Switch. Pulled out is machine **ON**. Pushed in is machine **OFF**.

If the Emergency Stop has been engaged you must allow to reset.

- Pull out stop switch
- Key off ignition and allow all lights on display panel to go out
- Wait 10 seconds and turn ignition key to first position
- Allow engine preheat light to go out
- Start machine

Engine Bay Layout



01 Fuel Water Trap
Inspect daily
Drain as required

02 Engine Oil Dipstick
Inspect daily
Top up as required

3 Engine Coolant
Inspect daily
Top up as required

Service Intervals Guide

One time inspection	Maintenance Work	I	C	R	L	A
Initial Inspection after 50hrs	Engine Oil			R		
	Engine Oil Filter			R		

Regular inspection	Maintenance Work	I	C	R	L	A
Daily Inspection	Water build-up in the Fuel System	I	C			
	Engine Oil	I				A
	Lubrication Points	I			L	
Every 50hrs	Water build-up in the Fuel System	I	C			
	Lubrication Points				L	
Every 250hrs	Engine Oil	I				
	Climate Control	I			L	A
Every 500hrs	Engine Oil Filter			R		
	Engine Oil			R		
	Drive Motor Oil	I		R		A
	Slewing Gear				L	
	Fuel Filter			R		
	Fuel Pre-filter	I				
	Cooling Fins	I	C			
	Hydraulic Screwed Connections	I				
Every 1000hrs	Hydraulic Oil Return Filter			R		
	Hydraulic Oil Filter			R		
	Fan Belt	I				
Every 2000hrs	Coolant			R		
	Hydraulic Oil Suction Filter			R		
	Alternator	I				
	Starter	I				
	IN/EX Valves	I				A
Every 4000hrs	Water Pump	I				
	Hydraulic Oil			R		
Every 6yrs	Hydraulic Pipes			R		
Every 10000hrs	SANY Service					

CHECK	Maintenance Work	I	C	R	L	A
As required	Outer Air Filter	I	C	R		
	Inner Air Filter	I		R		
	Coolant	I		R		
	Cooling Fins	I	C			
	Track Tension	I				A
	Track Shoes Fastening	I				A
	Bucket	I		R		A
	Bucket Teeth	I		R		

Maintenance Steps	After (hr)			Every (hr)							
	50hrs	100hrs	500hrs	50hrs	100hrs	200hrs	250hrs	500hrs	1000hrs	2000hrs	2500hrs
Boom Swing Pin				L	L	L	L	L	L	L	L
Boom Swing Cylinder Pin				L	L	L	L	L	L	L	L
Boom Socket-head Bolts				L	L	L	L	L	L	L	L
Boom / Arm Connecting Pin				L	L	L	L	L	L	L	L
Arm Cylinder Pin				L	L	L	L	L	L	L	L
Arm / Bucket Connecting Pin				L	L	L	L	L	L	L	L
Bucket Socket-head Pins				L	L	L	L	L	L	L	L
Slewing Gear											
Blade Pin				L	L	L	L	L	L	L	L
Blade Cylinder Pin				L	L	L	L	L	L	L	L
Door Pin				L	L	L	L	L	L	L	L
Track Tensioner				I, A	I, A	I, A	I, A	I, A	I, A	I, A	I, A

* First 500 hrs all oils and filter changed except Hydraulic Oil

Service Refill Capacities	
Fuel Tank	20 l
Engine Coolant	4.1 l
Engine Oil	2.5 l
Drive Motor (per side)	0.4 l
Hydraulic System	26 l
Hydraulic Oil Tank	21 l

KEY	
Inspect	I
Clean	C
Replace	R
Lubricate	L
Adjust	A

Machine Dimensions	
Overall Length	3,640 mm
Overall Width	980/1,350 mm
Overall Width of Superstructure	980 mm
Overall Height above Cab	2,420 mm

