

EXCAVATOR

SY26C

STANDARD FEATURES

- ➔ Swing boom functionality
- ➔ Reduced tail swing
- ➔ 1-way and 2-way primary auxiliary
- ➔ Powerful Stage V Yanmar engine

14.6 kW / 2400 rpm

Net Power

2810 mm

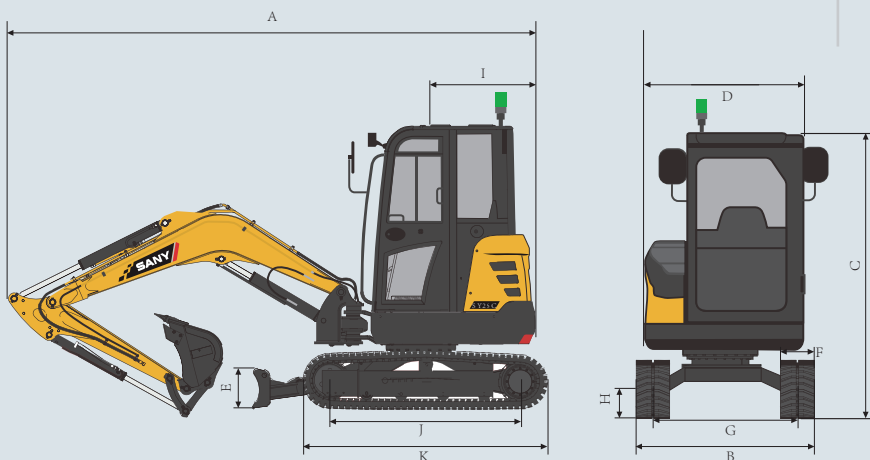
Dig Depth

2775 kg

Operating Weight

27.9 kN

Bucket Breakout Force



TECHNICAL SPECIFICATIONS

TECHNICAL SPECIFICATIONS	
Operating Weight	2775 kg
Ground Pressure	26 kPa
Engine	Yanmar 3TNV80F
Displacement	1.267 L
Gross Power	14.6 kW
Net Power	14.6 kW
Hydraulics	Load Sensing with Pilot Control
Main Hydraulic Pump	
Operating Flow (maximum)	78.0 L/min
Operating Pressure (maximum)	24.5 MPa
Auxiliary Flow (maximum)*	42.5 L/min
Auxiliary Pressure (maximum)	16 MPa
Travel Motor	Axial Piston
Travel Pressure (maximum)	24.5 MPa
Travel Speeds (maximum)	2.6 / 4.5 km/hr
Travel Effort (maximum)	23 kN
Grade Capability (maximum)	30°
Slew Motor	
Slew Pressure (maximum)	19.6 MPa
Slew Speed (maximum)	10 RPM
Undercarriage (standard)	Belted Rubber Track
Track Shoe Width (standard)	300 mm
Track Rollers (per side)	4
Carrier Rollers (per side)	1

DIMENSIONS

DIMENSIONS	
Boom Length	2100 mm
Dipper Length	1300 mm
A Transport Length	4160 mm
B Transport Width	1550 mm
C Transport Height	2410 mm
D Upper Structure Width	1375 mm
E Blade Height	300 mm
F Track Width (standard shoe)	300 mm
G Track Gauge	1250 mm
H Ground Clearance (minimum)	290 mm
I Tail Swing Radius	915 mm
J Track Length on Ground	1560 mm
K Track Length	2005 mm

SERVICE REFILL CAPACITIES

Fuel Tank Capacity	34.0 L
Hydraulic Tank Capacity	30.0 L
Engine Oil Capacity	3.4 L
Cooling System Capacity	4.1 L

Based on theoretical calculation at max flow with no load. Subject to alterations. In the interest of continual equipment development, SANY UK Inc. reserves the right to change these specifications at any time without prior notification.

*Based on theoretical calculation at max flow with no load. Subject to alterations. In the interest of continual equipment development,



STANDARD AND OPTIONAL EQUIPMENT

s = standard / o = optional

SY26C	ENGINE
s	3TNV80F-SPSY3
s	EU Stage V compliant
s	Three-stroke
s	Dual-element dry air filter
s	Engine air precleaner
s	Coolant expansion tank
s	Water-cooled
s	Fan guard
s	Engine coolant to -37 deg. C
s	Full-flow oil filter
s	High flow cooling fan
s	500-hour engine-oil-change interval
s	Fuel filter and water separator
	HYDRAULIC SYSTEM
s	Spring-applied, hydraulically released automatic swing brake
s	Load sensing hydraulic system
s	Control pattern change valve
s	Primary auxiliary hydraulic circuit with 1 and 2-way combination piping
s	Adjustable auxiliary pressure relief
	UNDERCARRIAGE
s	Expandable and retractable tracks
s	Planetary drive with axial piston motors
s	Propel motor shields
s	Spring-applied, hydraulically released automatic propel brake
s	Track guides, front idler and 2 per side
s	2-speed travel selection through display and on dozer lever
s	4 lower track rollers each side
s	1 upper carrier roller each side
s	Dozer blade and cylinder guarding
s	Flip out dozer blade extentions
s	Tie downs on track frame and dozer blade
s	300mm wide rubber tracks
s	Undercarriage frame opening guard
	UPPERSTRUCTURE
s	Left-hand mirrors
s	Lockable cab, hood and service doors

**INDUSTRY'S
STRONGEST
STANDARD
WARRANTY**

**5-YEARS*
5,000 HOURS**

*Warranty applies to 2024 Excavator models only

s = standard / o = optional

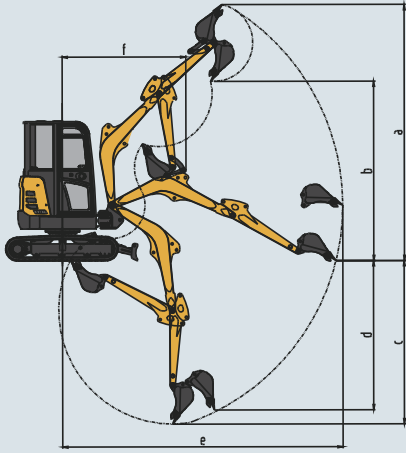
SY26C	UPPERSTRUCTURE (Continued)
s	Remote-mounted engine oil and fuel filters
s	Daily fluid level inspection visible from ground
s	Rear reflectors
	ATTACHMENTS
s	Convenient grease points
s	Dirt seals on all bucket pins
s	Oil-impregnated bushings
s	Reinforced thrust plates
s	Quick release couplers
	OPERATOR'S STATION
s	Hydraulic pilot controls for boom, stick, swing, and travel operations
s	Proportional auxiliary switches on joystick
s	Travel levers with foot pedals
s	Weight adjustable suspension vinyl seat with fore/aft adjustment
s	2" retractable seat belt
s	Emergency stop switch
s	Monitor with engine coolant gauge, high temp warning, low oil pressure indicator, glow plug indicator, battery indicator, engine hour meter, fuel level
s	Operation and maintenance manual storage
s	Heavy duty removeable rubber floor mat
s	Cup holder
s	Storage bin
s	Horn (electric)
s	Hour meter (electric)
s	Hydraulic shut off lever, all controls
s	Travel alarm with cancel switch
	ELECTRICAL
s	12V electrical system
s	Maintenance free battery
s	Ground level battery disconnect
s	Easy access fuse panel
s	Terminal battery covers
s	40-amp alternator
s	12V power outlet
	LIGHTS
s	Work lights: 2 mounted on top of canopy, 1 mounted on boom, magnetic beacon

Based on theoretical calculation at max flow with no load. Subject to alterations. In the interest of continual equipment development, SANY UK Inc. reserves the right to change these specifications at any time without prior notification.



PRODUCT SPECIFICATIONS EXCAVATOR || SY26C

WORKING RANGE



WORKING RANGE

Boom Length	2100 mm
Dipper Length	1300 mm
A Maximum Digging Height	4405 mm
B Maximum Dumping Height	3130 mm
C Maximum Digging Depth	2810 mm
D Maximum Vertical Wall Digging Depth	2210 mm
E Maximum Reach at Ground Level	4710 mm
F Minimum Swing Radius	1985 mm

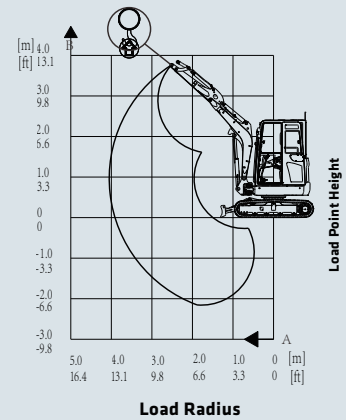
DIGGING PERFORMANCE

Boom Length	2100 mm
Dipper Length	1300 mm
Bucket Breakout Force (ISO)	27.9 kN
Dipper Tearout Force (ISO)	14.2 kN

LIFTING PERFORMANCE

Standard 2100 mm Boom
Standard 1300 mm Dipper
Standard 300 mm Tracks

Ratings are based on ISO 10567:2007. Lift capacity does not exceed 75% of tipping load with the machine on firm, level ground or 87% of hydraulic lifting capacity.



BLADE DOWN	LOAD RADIUS	6.6 ft 2.0 m		9.8 ft 3.0 m		9.8 ft 4.0 m		MAX REACH	
	LOAD POINT HEIGHT								
	13.2 ft 4.0 m							1468 lb* 666 kg*	1468 lb* 666 kg*
	9.8 ft 3.0 m			1380 lb* 626 kg*	1210 lb 549 kg			1157 lb* 525 kg*	992 lb 450 kg
	6.6 ft 2.0 m			1528 lb* 693 kg*	1179 lb 535 kg			1060 lb* 481 kg*	772 lb 350 kg
	3.3 ft 1.0 m	3490 lb* 1583 kg*	2004 lb 909 kg	1951 lb* 885 kg*	1107 lb 502 kg	1539 lb* 698 kg*	719 lb 326 kg	1096 lb* 497 kg*	705 lb 320 kg
	0 ft 0 m	4096 lb* 1858 kg*	1885 lb 855 kg	2242 lb* 1017 kg*	1049 lb 476 kg			1259 lb* 571 kg*	730 lb 331 kg
	-3.3 ft -1.0 m	3569 lb* 1619 kg*	1896 lb 860 kg	2053 lb* 931 kg*	1045 lb 474 kg			1587 lb* 720 kg*	884 lb 401 kg
BLADE UP	13.2 ft 4.0 m							1468 lb* 666 kg*	1468 lb* 666 kg*
	9.8 ft 3.0 m			1380 lb 626 kg	1210 lb 549 kg			1138 lb 516 kg	992 lb* 450 kg
	6.6 ft 2.0 m			1356 lb 615 kg	1179 lb 535 kg			886 lb 402 kg	772 lb 350 kg
	3.3 ft 1.0 m	2385 lb 1082 kg	2004 lb 909 kg	1279 lb 580 kg	1107 lb 502 kg	829 lb 376 kg	719 lb 326 kg	811 lb 368 kg	705 lb 320 kg
	0 ft 0 m	2258 lb 1024 kg	1885 lb 855 kg	1221 lb 554 kg	1049 lb 476 kg			840 lb 381 kg	730 lb 331 kg
	-3.3 ft -1.0 m	2269 lb 1029 kg	1896 lb 860 kg	1215 lb 551 kg	1045 lb 474 kg			1023 lb 464 kg	884 lb 401 kg

* Indicates load limited by hydraulic lifting capacity.

Based on theoretical calculation at max flow with no load. Subject to alterations. In the interest of continual equipment development, SANY UK Inc. reserves the right to change these specifications at any time without prior notification.

