

STH625

SANY

Quality Changes the World

MORE FEATURES, MORE POSSIBILITIES

PERFORMANCE AND EFFICIENCY
ON THE HIGHEST LEVEL

Compact telehandler with power and precision. The STH625 features the same cabin of all the larger models, while offering a compact machine dimension. Perfect for working on small and reduced height construction sites.



COMPACT TELEHANDLER **STH625**

Operating mass
5200 kg
Load capacity
2500 kg
Maximum lifting height
6000 mm
Rated power
55.4 kW

FULL SIZED CABIN, HIGH PRODUCTIVITY

MAIN FEATURES

Lifting height	6000 mm	Forward reach	3350 mm	Travelling speed	25 kph	Turning radius	3350 mm
Overall width	1850 mm	Hydrostatic transmission		Height over cab	1920 mm	Load capacity	2500 kg

OPERATING COMFORT/CAB

- 10-inch touchscreen display and encoder navigation
- Heater and air conditioning
- Radio with Bluetooth and microphone
- Adjustable seat with suspension
- 12 V power socket
- Sunblind, roof and front screen
- Heated rear screen
- Front, roof and rear wiper and washers
- Armrest with storage and USB charger
- Cup and bottle holders
- Fully adjustable steering column
- Intuitive keypad functions (all backlit)
- EVI Telematics

WORKING LIGHTS

- 7 x LED Working lights on cab and boom
- Full LED road lights
- Amber flashing beacon

WORK EQUIPMENT

- Standard Sany Fast Fit carriage with 1200 mm forks
- Manitou carriage with fork frame (optional)
- Three steering modes: 4WS, 2WS and crab
- Fully proportional joystick
- Auxiliary hydraulic venting from cab

SAFETY

- CE / UKCA-certified
- ROPS ISO:3471:2008 and FOPS ISO:3449:2005
- Screen and roof guard (optional)
- Reversing alarm
- Hi-viz seatbelt
- Integrated reversing camera and distance sensor
- Seat switch and green „ready“ beacon
- Load weight monitoring
- Load moment Indicator display



Absolute reliability – for peace of mind!

SANY's telehandler comes with 3 years, 3,000 hrs warranty* gives you the assurance that you can fully count on your equipment.

* With participating partners

COMPACT, PRODUCTIVE, COMFORTABLE – ACCESS ALL AREAS

Safer Working

- + Reversing camera & distance sensor
- + EN1500 load control system
- + Full sized ROPS & FOPS cabin
- + Cabin offers maximum visibility
- + Seat present switch
- + Green seatbelt beacon

Ultimate Manoeuvrability

- + Turning radius of 3350 mm, 3 steer modes
- + 4WS sites and constrained space
- + 2WS for roading between sites
- + CRAB positioning away or up to walls



PERFORMANCE PARAMETERS

Maximum lift capacity	kg	2500
Lift capacity at maximum height	kg	2000
Lift capacity at maximum reach	kg	800
Lift height	mm	6000
Maximum forward reach	mm	3350
Carriage crowd angle	°	12
Carriage dump angle	°	117
Outside turning radius (4WS)	mm	3350
Auxiliary hydraulic flow	l/min	80
Auxiliary hydraulic pressure	mpa	270
Noise at driving position	lpa	76
Noise to environment	lwa	104

BOOM PARAMETERS

Boom (raise/lower)	sec	8/5.5
Boom (extend/retract)	sec	6/5.5

TYRES

Type/size	12-16.5
-----------	---------

ENGINE

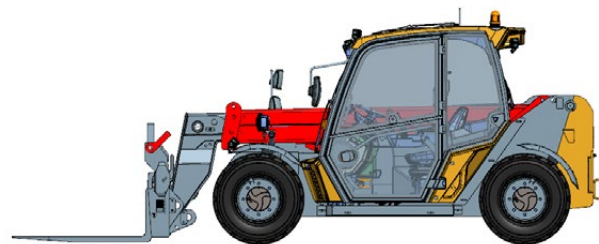
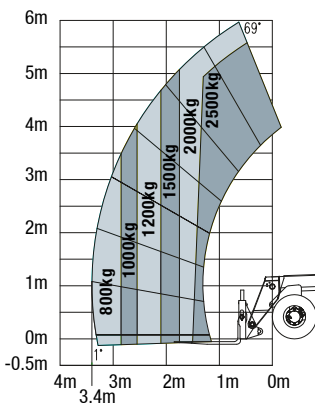
Engine brand	DEUTZ	
Engine emission	STAGE 5	
Engine model	DEUTZ TD 2.9	
Number of cylinders	4	
Engine power rating	kW	55.4 (75ph)
Max. torque / engine rotation	Nm/rpm	260- @ 1600

SERVICE REFILL CAPACITIES

Hydraulic system	litr	70
Fuel tank	litr	80

CABIN

Cabin is ROPS & FOPS tested & conforms to ISO 3471/3449.



TRANSMISSION

Transmission type	Hydrostatic	
Transmission brand	Dana 312	
Axles	Dana 211	
Number of forward gears	2	
Number of reverse gears	2	
Max. travel speed	kph	25
Parking brake	SAHR	
Service brake	Oil-immersed multi-discs	

HYDRAULIC SYSTEM

Hydraulic pump type	Gear with priority valve	
Hydraulic pump	Cassapa	
Hydraulic manifold	Husco	
System pressure	bar	270
Hydraulic flow	l/min	80

DIMENSIONS

Length to front of carriage	mm	4000
Overall width	mm	1850
Height over cab without beacon	mm	1920
Height over cab with beacon	mm	2010
Wheelbase	mm	2390
Overall cabin width	mm	960
Ground clearance	mm	255
Turning radius over tyres	mm	3350
Operating mass (with forks)	kg	5200

POINT LOADS

Machine loaded with models maximum capacity		
Load per front tyre	3350 kg	
Load per rear tyre	500 kg	
Machine unloaded with boom in horizontal travel position		
Load per front tyre	1250 kg	
Load per rear tyre	1350 kg	