

STH625E

SANY

Quality Changes the World



MORE FEATURES, MORE POSSIBILITIES

PERFORMANCE AND EFFICIENCY
ON THE HIGHEST LEVEL

Compact, efficient, high-powered and fully electrical telehandler. The STH625E delivers less noise, less vibration and less pollution. Compact dimension, is perfect for working indoors or in other enclosed spaces urban or construction.



FULL ELECTRIC COMPACT TELEHANDLER STH625E

Operating mass
5,260 kg
Battery size
50 kWh
Hydraulic power
32 kW
Working hours
8

PROVEN TECHNOLOGY, NEW ENERGY

MAIN FEATURES

Lifting height	6 meters	Battery voltage	310 V / 106 AH	Travelling speed	20 kph	Turning radius	3350 mm
Overall width	1850 mm	Driving power	32 kW	Height over cab	1920 mm	Capacity	2,500 kg

OPERATING COMFORT/CAB

- 10-inch touchscreen display and encoder navigation
- Heater and air conditioning
- Radio with Bluetooth and microphone
- Adjustable seat with suspension
- 12 V power socket
- Sunblind, roof and front screen
- Heated rear screen
- Front, roof and rear wiper and washers
- Armrest with storage and USB charger
- Cup and bottle holders
- Fully adjustable steering column
- Intuitive keypad functions (all backlit)
- EVI Telematics

WORKING LIGHTS

- 7 x LED Working lights on cab and boom
- Full LED road lights
- Amber flashing beacon

WORK EQUIPMENT

- Standard Sany Fast Fit carriage with 1200 mm forks
- Manitou carriage with fork frame (optional)
- On board charger
- External 3 phase fast charge: optional
- Three steering modes: 4WS, 2WS and crab
- Fully proportional joystick
- Auxiliary hydraulic venting from cab

SAFETY

- CE / UKCA-certified
- ROPS ISO:3471:2008 and FOPS ISO:3449:2005
- Screen and roof guard (optional)
- Reversing alarm
- Hi-viz seatbelt
- Integrated reversing camera and distance sensor
- Seat switch and green „ready“ beacon
- Load weight monitoring
- Load moment Indicator display



Absolute reliability – for peace of mind!

SANY's telehandler comes with 3 years, 3,000 hrs warranty* gives you the assurance that you can fully count on you equipment.

STH265e CATL battery comes with 5 years or 10,000 hrs warranty period.

* With participating partners

EQUIPMENT **STH625E**

CHARGE ANYWHERE WITH ANY POWER SOCKET

SANY PREMIUM PORTABLE CHARGER –
4 SOCKET ADAPTER PLUGS – 110V / 220V / 320V AC

Electric technology

SANY's electric telehandler offers significant operational benefits:

- + No service or diesel filters to replace
- + Easy and quick battery charging
- + Low noise and vibration levels
- + Endless applications and use

Energy recovery

Regenerative braking.

SANY's E-POWER energy recovery system captures up to 16% power ensuring the STH625e is efficient and more productive for longer.



PERFORMANCE PARAMETERS

Maximum lift capacity	kg	2500
Lift capacity at maximum height	kg	2000
Lift capacity at maximum reach	kg	800
Lift height	mm	6000
Maximum forward reach	mm	3350
Carriage crowd angle	°	12
Carriage dump angle	°	117
Frame levelling +/-	°	NA
Outside turning radius (4WS)	mm	3350
Auxiliary hydraulic flow	l/min	80
Auxiliary hydraulic pressure	mpa	270
Noise at driving position	lpa	68
Noise to environment	lwa	76

BOOM PARAMETERS

Boom (raise/lower)	sec	9.4/6.7
Boom (extend/retract)	sec	9.6/6

TYRES

Type/size		12-16.5
-----------	--	---------

WORKING POWER INFORMATION

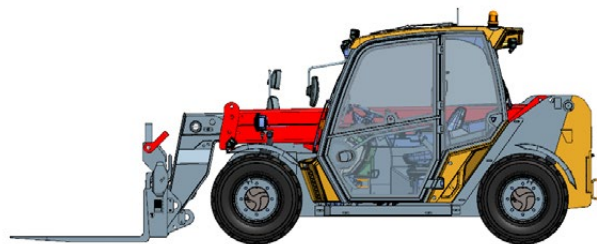
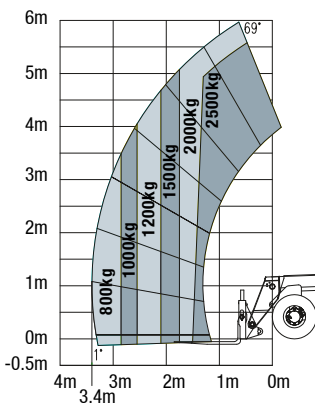
Battery nominal voltage	V	310 / 106AH
Battery technology		LFP
Battery energy	kWh	50
Recharge hours rapid	H	1.5
Recharge hours standard	H	7.5
Recharge voltage	V	110/220/320
Driving motor power	kW	32

SERVICE REFILL CAPACITIES

Hydraulic system	ltr	70
------------------	-----	----

CABIN

Cabin is ROPS & FOPS tested & conforms to ISO 3471/3449.



TRANSMISSION

Transmission type		Electrical
Transmission brand		Dana 301
Transmission motor		Inovance
Driving power	kW	32
Axles		Dana 211
Number of forward gears		2
Number of reverse gears		2
Max. travel speed	kph	20
Parking brake		SAHR
Service brake		Oil-immersed multi-discs

HYDRAULIC SYSTEM

Hydraulic pump type		Gear pump
Hydraulic motor		Inovance
Hydraulic power	kW	32
Hydraulic pump		Cassapa
Hydraulic manifold		Husco
System pressure	bar	270
Hydraulic flow	l/min	80

DIMENSIONS

Length to front of carriage	mm	4000
Overall width	mm	1850
Height over cab without beacon	mm	1920
Height over cab with beacon	mm	2010
Wheelbase	mm	2390
Overall cabin width	mm	960
Ground clearance	mm	250
Turning radius over tyres	mm	3300

POINT LOADS

Machine loaded with models maximum capacity	
Load per front tyre	3380 kg
Load per rear tyre	580 kg
Machine unloaded with boom in horizontal travel position	
Load per front tyre	1265 kg
Load per rear tyre	1365 kg

SANY

Quality Changes the World

SANY HEAVY MACHINERY (UK) LTD

info@sanyuk.com
www.sanyuk.com

Not all products are available in all markets. As part of our continuous improvement process, we reserve the right to modify specifications and designs without giving prior notice. The figures may contain additional options.