

SANY®

SANY Industrial Park
Dongcheng Avenue, Kunshan Economic and Technological Development Zone, Jiangsu Province, China
Postal Code: 215300

Reminder:
Any change in the technical parameters and configuration due to product modification or upgrade may occur without prior notice. The machine in the picture may include additional equipment. This brochure is for reference only, and goods in kind shall prevail.
Copyright at SANY. No part of this brochure may be copied or used for any purpose without written approval from SANY.

© Version 2025-07-25



Contact SANY Group Follow SANY Group

SANY HEAVY MACHINERY |     www.sanyglobal.com

SANY®

QUALITY CHANGES THE WORLD



Engine power
129 kW/2200 rpm

Bucket capacity
1.25 m³

Operating weight
23700 kg

SY235LC

Sany All-New Excavator



Read E-brochure

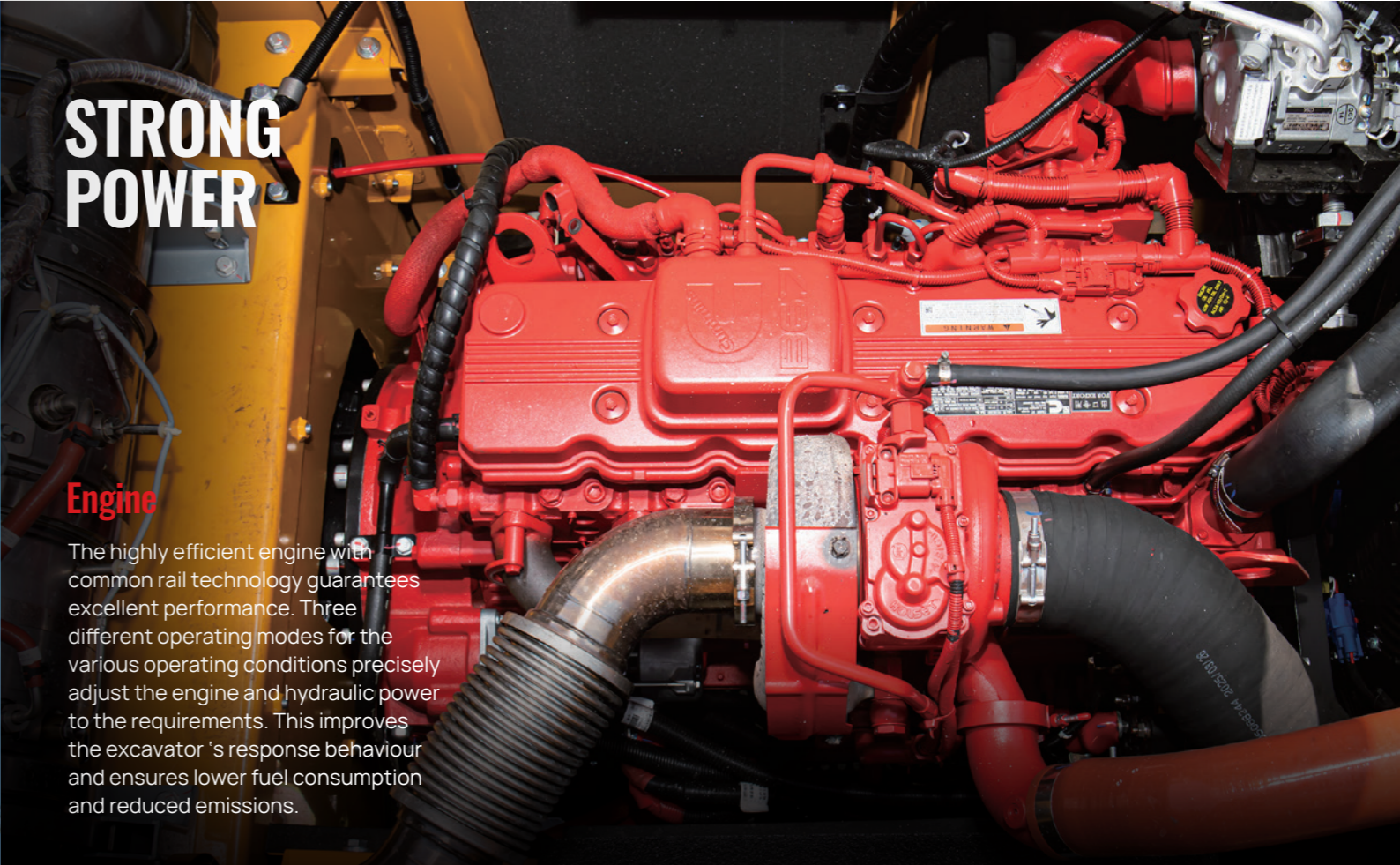
HIGHLIGHTS



STRONG POWER

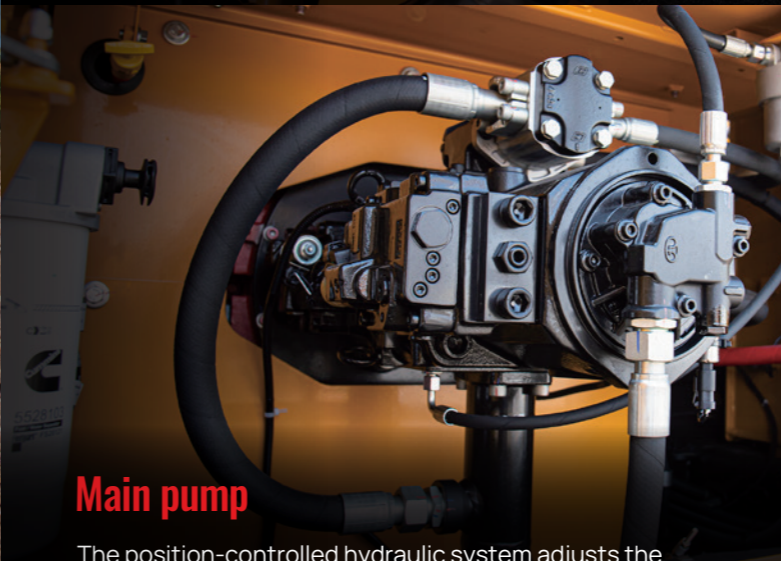
Engine

The highly efficient engine with common rail technology guarantees excellent performance. Three different operating modes for the various operating conditions precisely adjust the engine and hydraulic power to the requirements. This improves the excavator's response behaviour and ensures lower fuel consumption and reduced emissions.



Main pump

The position-controlled hydraulic system adjusts the required pressure and oil quantity according to requirements. The powerful, variable piston pumps reach a flow rate of 2 x 228 L/min and therefore achieve a very high level of efficiency at a low engine speed.



Main valve

The designation is according to the needs of customers, which has "high reliability, small pressure loss, high flow distribution efficiency, smooth compound action" and other outstanding advantages, to help customers easily solve heavy work.



HIGHLIGHTS



COMFORTABLE DRIVING

For drivers to fully concentrate on their work, they first need to be sitting comfortably. The individually adjustable, air-suspension seat offers a comfortable work station from which all of the controls are within easy reach. The multifunctional joysticks make it easy to control the attachment devices reliably and precisely, directly relaying the control commands without delay.



Includes the large monitor which can be set to several languages, the automatic climate control system, the powerful heating, the keypad with an additional USB port for the driver's own audio devices, etc.

POWERFUL IN PERFORMANCE

.01

Components

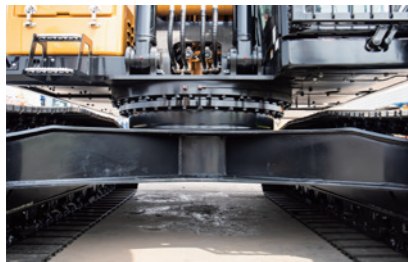
High quality and tried & tested the water-cooled Cummins diesel engine with common rail technology and AdBlue system guarantees reliable performance, even under tough working conditions. The complete package is rounded off by the finely tuned Kawasaki hydraulic system.



.02

Dimensions

Agile power – the SY235LC works through its programme quickly and with great power. This excavator has great power reserves in its 23 tones. The machine is mounted on a stable HD undercarriage so that it can be used to the full.



.03

Quality

The machines have a great deal of work to do during their tough day-to-day work on construction sites. This is why from the design stage, to selecting the materials used, quality and conducting the final checks all excavators by SANY are designed to be robust. For instance, all welded seams are computer controlled by robots this maximum precision ensures stability and reliability.



.04

Safety

Safety as a production factor– it is only possible to work cost-effectively if you work safely. This is why the large safety package has everything included as standard, from a travel alarm to the rotating alarm, and from the boom safety valve to the overload warning for lifting and the engine emergency switch.



.05

User experience

Comfortable workstation – the cabin of the SY235LC leaves nothing to be desired. All of the controls are within easy reach from the airsuspension seat which supports the driver's back. Maintenance and service support is also easy to reach, Thanks to the large and easily accessible service doors and clear layout of the most important components, this work is quick and easy to complete.



.06

Stability

The SY235LC 's particularly stable heavy-duty undercarriage provides the maximum possible stability. Its welded reinforcements and the use of robust, high strength steel ensure minimal wear, even when used continually under the maximum load. The steel chains used also offer the highest quality standard – for a stable foundation on any surface.





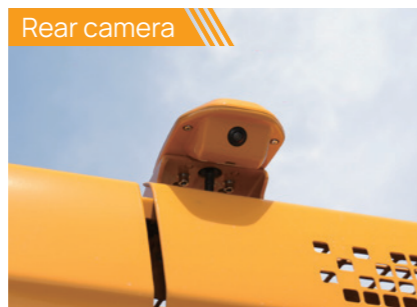
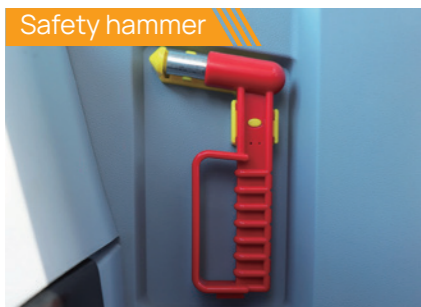
Complete research & development and test system

SANY has established complete machine endurance test center with full functions. Each model of excavator must be subjected to over 2,000h field excavating test.

Key components like working device, cab and hydraulic components etc. must be subject to fatigue test over 800,000 times.



Safety facility



Advanced manufacturing technology

SANY has RGV assembling line and full automatic welding robots, and possesses high precision machining equipment and precise machining center.

SANY's manufacturing and assembling lines won five-star national site in 2013 and national quality award in 2014. In 2023, SANY Mini Excavator Factory was awarded as the intelligent factory.



TECHNICAL SPECIFICATIONS

SPECIFICATION	UNIT	VALUE
Operating weight	kg	23700
Bucket capacity	m ³	1.25
Engine	-	Stage V
Model	-	QSB6.7
Type	-	Water-cooled, 6 cylinder, with commonrail and Adblue
Engine power	kW/rpm	129/2200
Maximum torque	N·m/rpm	1120/1100
Displacement	ccm	6700
Batteries	V	2x12

HYDRAULIC SYSTEM	UNIT	VALUE
Mainpump	-	2 x variable-piston-pump with electronic positive control
Max. oilflow	L/min	2 x 228
Travelmotor	-	2 speed axial piston motor with planetary reducer and automatic multi-disc brake
Swingmotor	-	Axial piston motor with planetary reducer and automatic holding brake

SERVICE REFILL CAPACITIES	UNIT	VALUE
Fuel tank	L	370
Engine coolant	L	27.6
Engine oil	L	27
Drive (per side)	L	4.4
Adblue	L	45
Hydraulic oil tank	L	280

MAIN PERFORMANCE	UNIT	VALUE
Swingspeed	rpm	11.1
Max. travel speed	km/h	5.4/3.4
Maximum Drawbar Pull	kN	222
Grade ability	°	35°
Ground pressure	kg/cm ²	0.49
Bucket digging force	KN	150
Arm digging force	kN	117

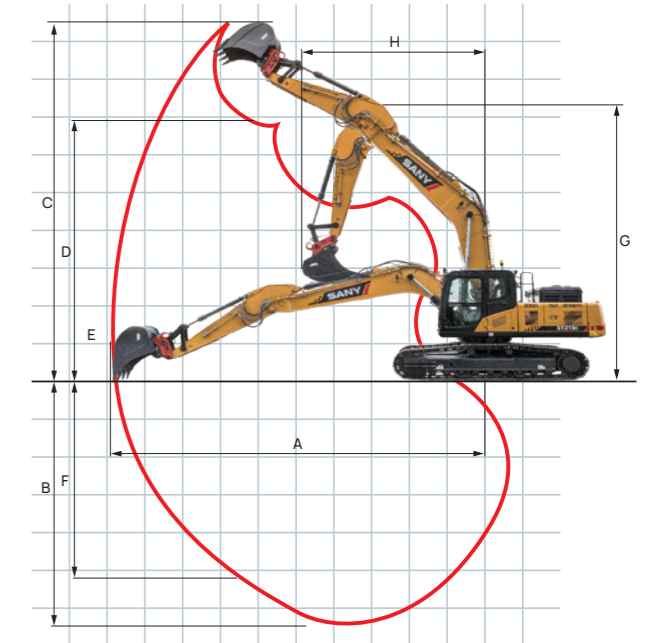
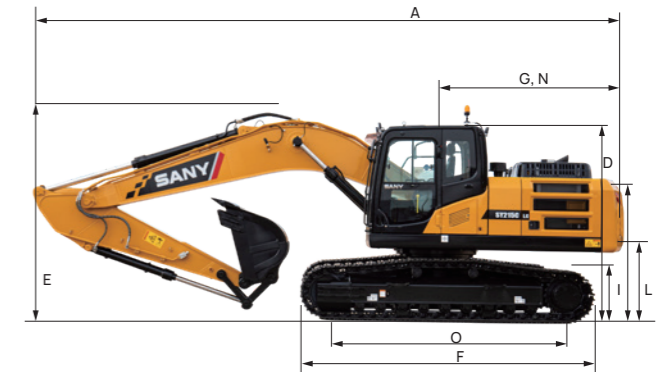
RELIEF VALVE SETTINGS	UNIT	VALUE
Implement circuit	bar	343
Power boost	bar	373
Swing circuit	bar	275
Travel circuit	bar	343
Pilot pressure	bar	39

UNDER AND UPPER STRUCTURE	UNIT	VALUE
Boom length	mm	5700
Arm length	mm	2925
Track rollers (each side)	-	9
Carrier rollers (each side)	-	2
Rotation device	-	Planetary gear reducer driven by an axial piston motor, automatic hydraulic released slewing brake

MACHINE DIMENSIONS

OVERALL DIMENSIONS (MM)	SY235LC
A. Transport length	9635
B. Transport width(600mm track shoes)	2980
C. Upperstructure carriage	2862
D. Height over cabin(without guards)	3170
E. Height of Boom - transport	3288
F. Overall length of crawler	4445
G. Tail length	2915
H. Track gauge	2380
I. Track height	950
J. Track pads width	600 700 800
k. Min. ground clearance	468
L. Counterweigh clearance	1060
M. Engine cover height	2950
N. Tail swing radius	2915
O. Center distance of tumbler	3640

MAIN PERFORMANCE	SY235LC
A. Max. digging reach	9745
B. Max. digging depth	6450
C. Max. digging Height	9740
D. Max. dumping height	6735
F. Max. vertical digging depth	6170
G. Overall height over arm by min. swing radius	7600
H. Min. swing radius	3662



STANDARD CONFIGURATION

ENGINE SYSTEM

Automatic engine speed control	●
Automatic engine idle shutdown	●
Electric refueling pump	○
Electric cooling fans	●

HYDRAULIC SYSTEM

Semi-electronic main control valve	●
Safety valve (STD for Europe)	○
Mode switch	○ (us)
Boom and stick regeneration circuits	●
Auto digging boost	●
Quick coupler circuit	○
AUX 1 & AUX 2	●

CABIN

ROPS Certification	●
Heated and cooled air suspension seat	●
CVG deluxe heated and cooled air suspension seat	Coming soon
10" display	●
Key panel	●
Parallel wiper	●
Keyless engine start button	●
Top and openable front guard	○
Sun roller blind	● (front + roof) ○ (right)

ELECTRICAL SYSTEM

Maintenance free battery	●
LED left/right-side boom lights, cab lights	●
Programmable time-delay LED working lights	●
Quick hitch of quick coupler	●

SAFETY AND SECURITY

Rear and right cameras	●
Ground-level engine shut-off switch	○
Overload alarm	●
360° visibility	○
Swing/travelling alarm	●
Seat belt alarm	○

BOOM&ARM&BUCKET&UNDERCARRIAGE

1.35m³ Stone Bucket 1	○
1.55m³ Earthmoving Bucket 2	●
No bucket attachment 3	○
2.95m Arm	●
3.5m Arm	○
600 mm triple ribbed track 1	●
700 mm triple ribbed track 2	○
800 mm triple ribbed track 3	○
Standard undercarriage (gauge 2390mm)	●
Widening undercarriage (gauge 2590mm)	○

SANY OVERSEAS SERVICE

GLOBAL SUPPORT ANYTIME ANYWHERE

900+



Overseas service centers

3500+



Professional technical service engineers

365×24



Support

Service Center

Tel: +86 4006098318

Mail: CRD@sany.com.cn

WhatsApp: +86 19908478631 (Only WhatsApp)



On-demand professional equipment repair services available anytime, anywhere, ensuring rapid response and efficient solutions.



Download MySANY for a comprehensive, all-in-one experience!

